



— anantya —
villaments







Ground Floor Living





Ground Floor Living





Cozy Corner





Dining, Kitchen & Pooja Room





Kitchen





Ground Floor Living



-anantya-
villaments



vaishnavi
DEVELOPMENTS



Guest Bed Room





First Floor Living





Children's Bed Room





Master Bed Room on First Floor





Attached Bathroom for Master Bed Room





View of Staircase leading to 2nd floor living





Staircase Full Top View





Second Floor Living & Sit out





Home Theatre



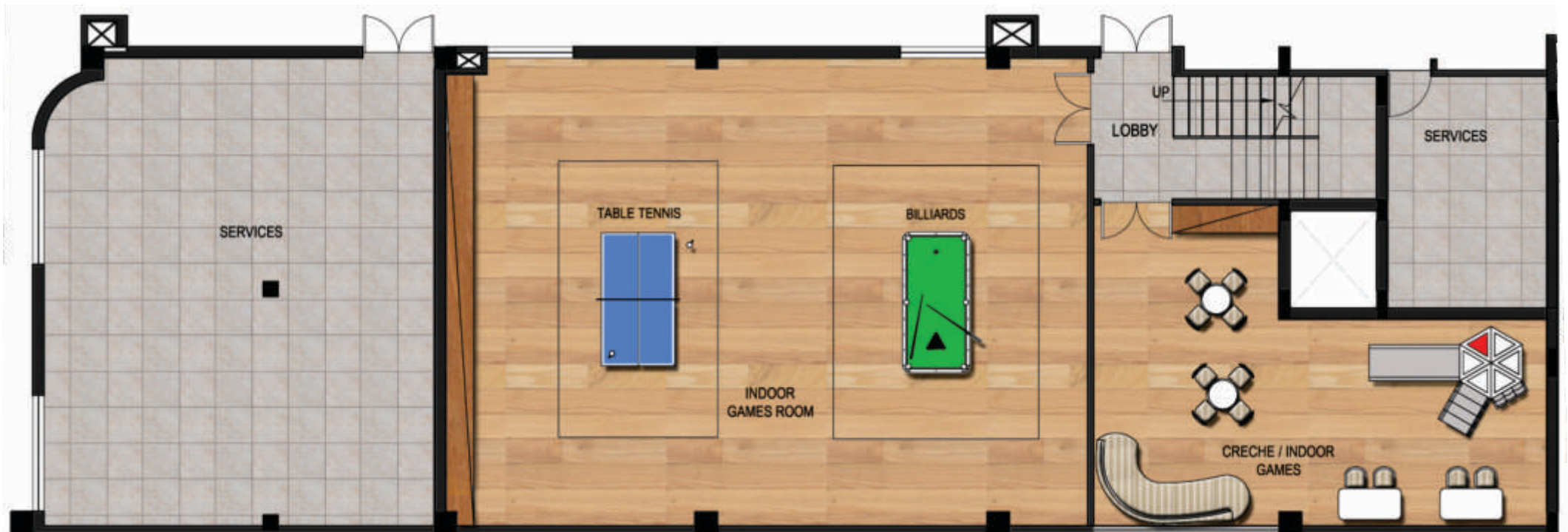


Bathroom next to Home Theatre





Site Layout



Basement Floor - Club House



Ground Floor - Club House

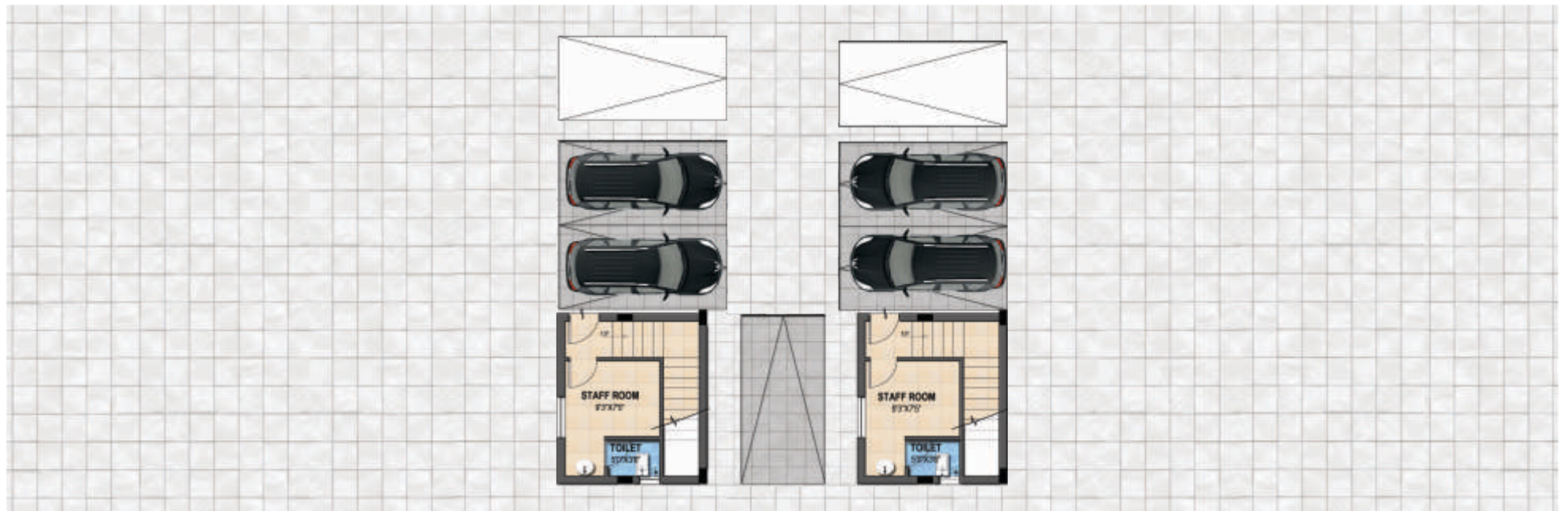


First Floor - Club House

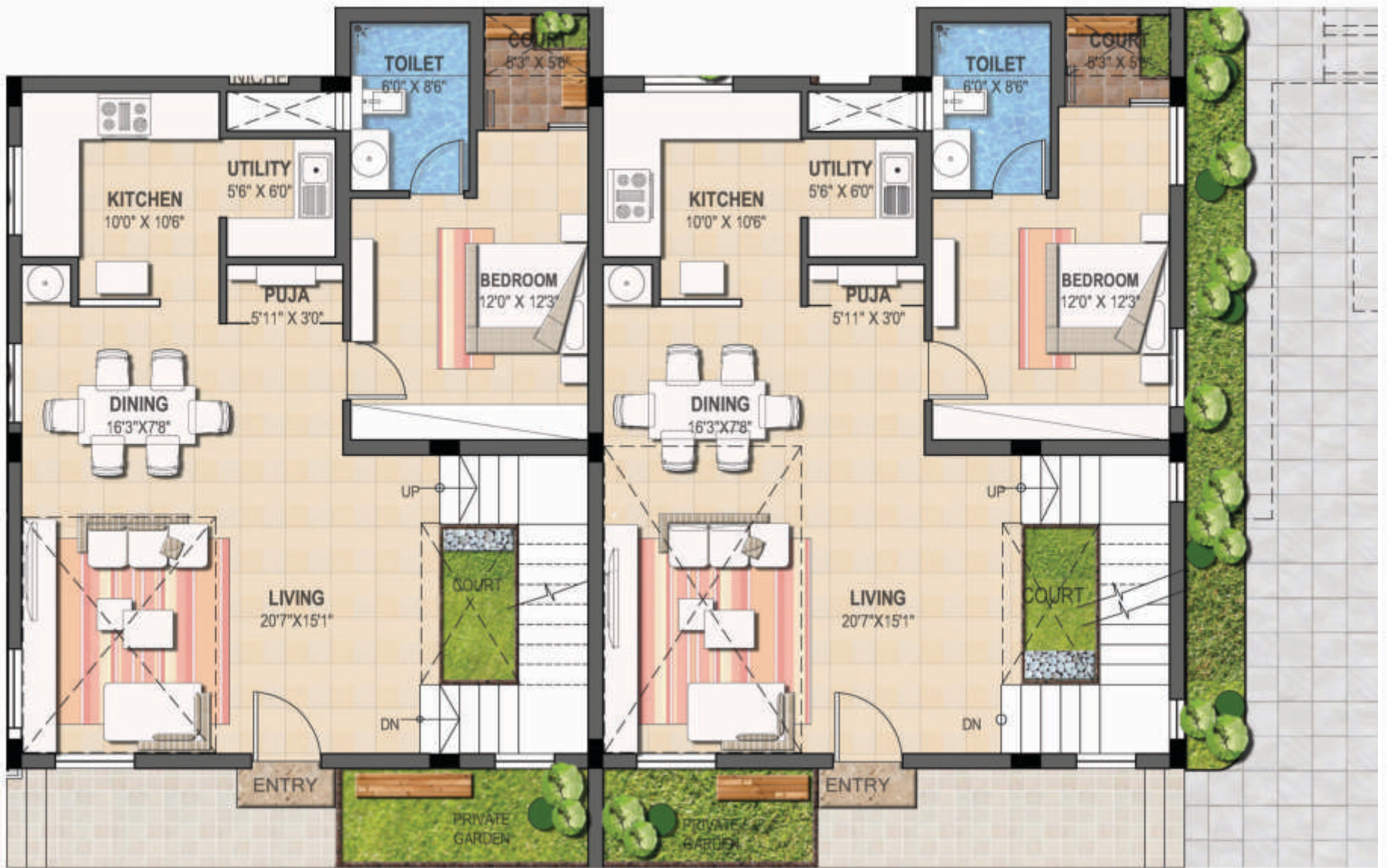


Second Floor - Duplex Apartment

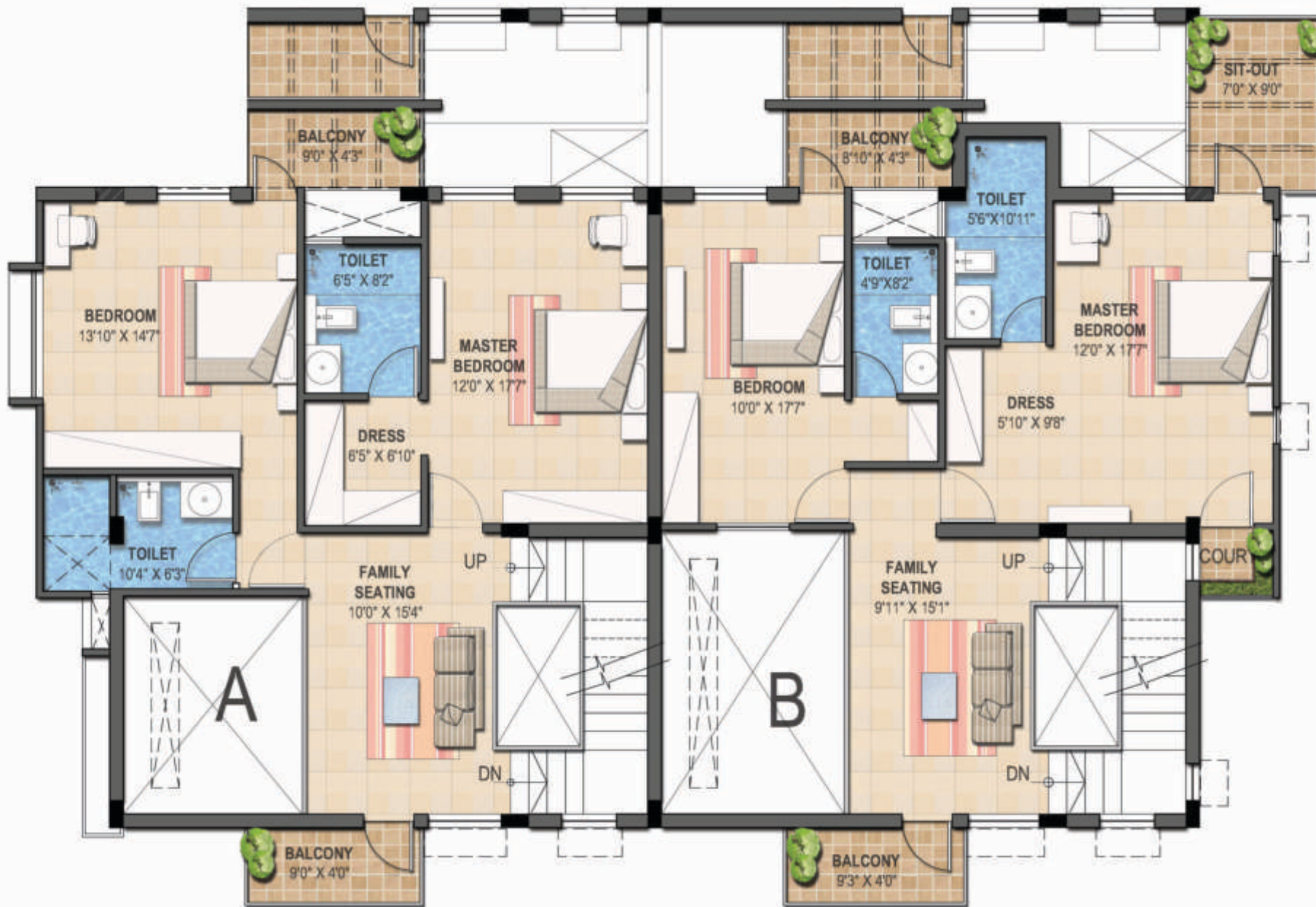




Basement Drive Way



Ground Floor

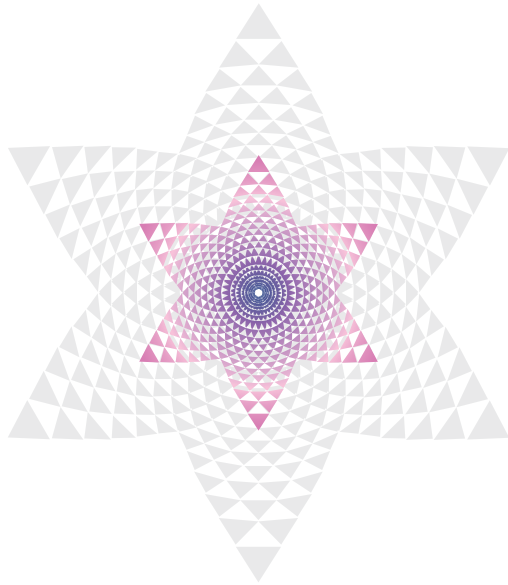


First Floor



Second Floor

anantya prithvi



It's a street built to care for man more than his machines.

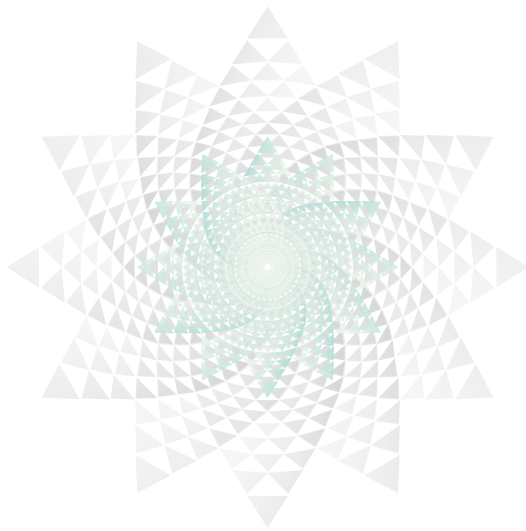
It's a boulevard landscaped for more homecomings than departures.

It's a bouquet of seating pockets designed for more discovery than conformity.

It's a network of pathways dotted with memories than milestones.

Earth is far more than the ground you walk on.

anantya aakaash



A living room so diverse, it entertains two levels and a staircase.

A bedroom so extravagant, it indulges in a pergola-covered sit-out.

A family room so friendly, it rendezvous with a landscaped terrace.

A villa so cultured, it respects the Indian sentiment of worship.

Space takes what you make of it, and makes it more.

anantya agni



A vivacious morning monologue in the court outside the bedroom.

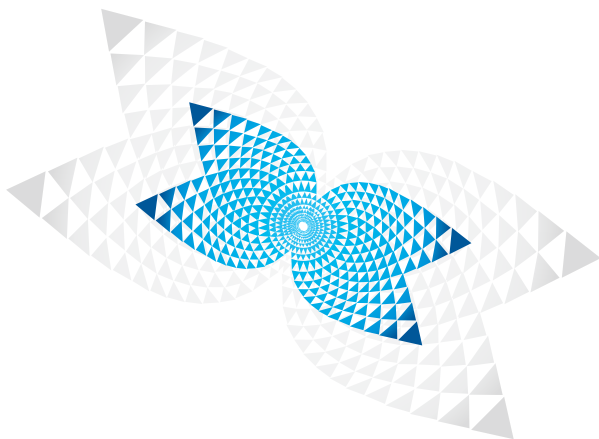
A coy exchange of glances through the skylight in the living room.

A fiery passionate conversation in the cozy sit-out under a pergola.

A relaxed heart-to-heart over a cup of sunset coffee in the balcony.

Light speaks many languages, for those who listen.

anantya vaayu



Flowing through a window carrying the exuberance of lush greens.

Meandering lightly down a staircase to enliven the living room.

Breezing across the family court infusing a wave of togetherness.

Dancing on a quaint sit-out overlooking the boulevards below.







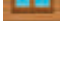






Air breathes joy into everything, everywhere.

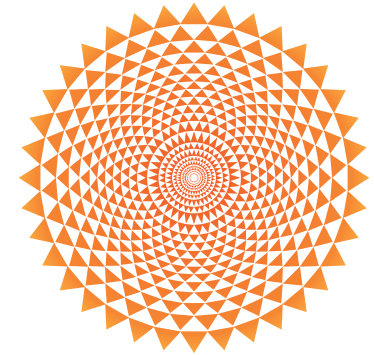
anantya amenities

- | Swimming Pool/ Toddler's Pool
- | Water fountain & Water bodies
- | Multipurpose Hall with amphitheatre
- | Well-equipped Gymnasium
- | Creche
- | Squash court
- | Dance floor /Yoga/Aerobics/Karaoke
- | Health club with Steam, sauna and massage rooms.
- | Shops/convenience Store
(Provision available up to association to take it farther)
- | Basket ball post
- | Jogging Track and walking boulevard
- | Spacious arrival/waiting lounge
- | Table Tennis, Snooker and other indoor games



anantya Specifications

	Structure	RCC framed structure
	Super Structure	Brick masonry for external and internal walls.
	Plastering	All internal and external walls with smooth plaster finish.
	Doors	Main door in teak frame with skin flush door shutters of "Standard Doors" or equivalent make and internal doors in non-teak wood frame and flush door shutters of "Standard Doors" or equivalent make.
	Windows	Aluminum powder quasar 3 track
	Painting	Hall, dining & living areas with putty finish. External walls with 2 coats of exterior acrylic emulsion paint. Basement areas Oil Bound Distemper
	Flooring	Living, Dining, Pooja room & granite vitrified tiles flooring in all other areas.
	Dadoing	Kitchen: Glazed Ceramic tiles dado upto 5' height above kitchen platform. Toilets: 8"x12" glazed ceramic tile dado of tiles upto 8'
	Kitchen	Granite platform has sink with water connections.
	Plumbing & Sanitaryware	Jaquar fittings
	Electrical	Concealed copper wire of reputed make.
	Sewerage Treatment Plant	A sewerage treatment plant of 300 KLD capacity will be provided to treat the waste water.
	Water	Borewell water - With Sump tank (1.5 Lack liter capacity)



— anantya —
villaments

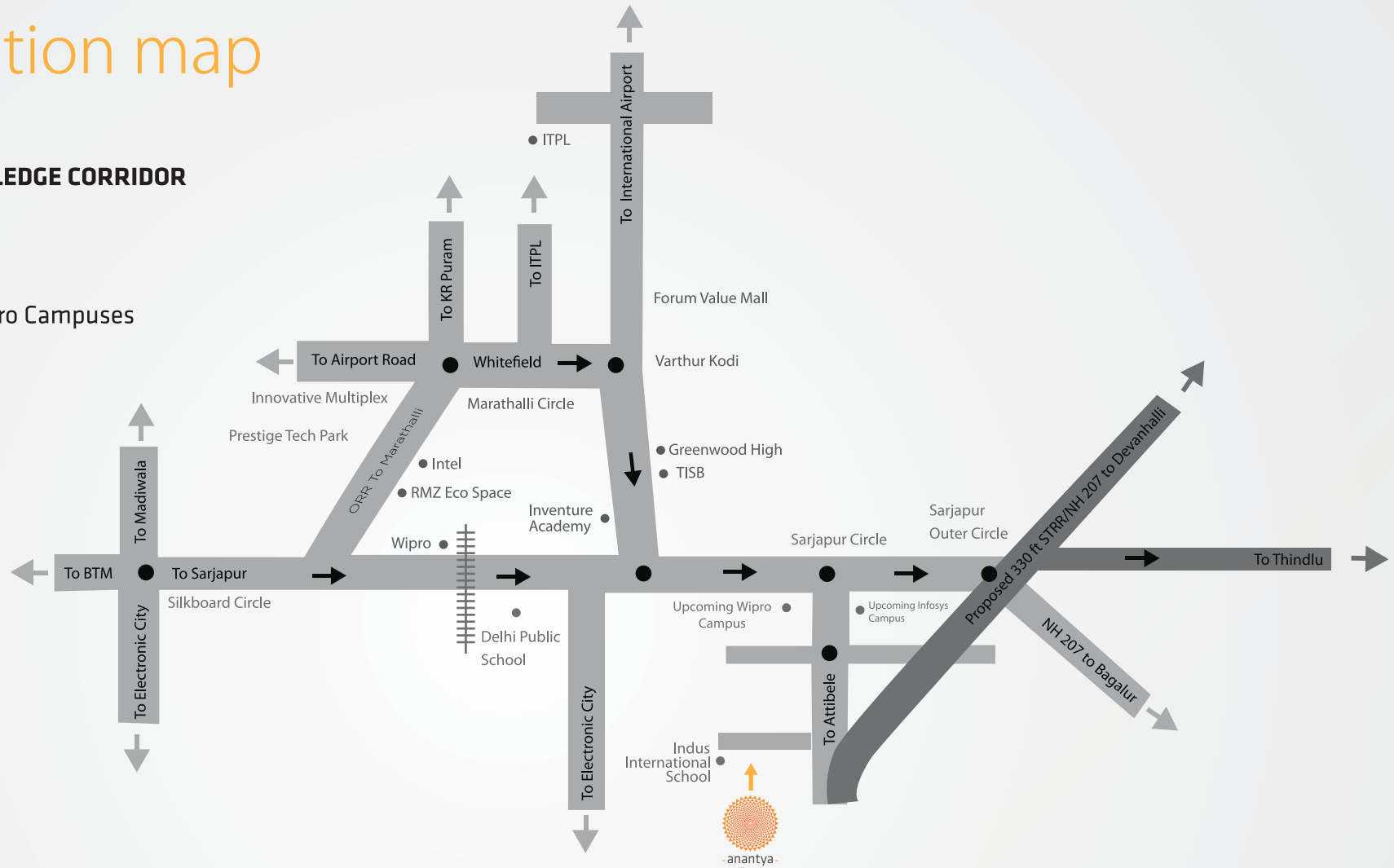


anantya location map

IN THE HEART OF THE KNOWLEDGE CORRIDOR

15km - Wipro
17km - ORR
17km - Intel & Cisco
2km - Upcoming Infosys & Wipro Campuses

23km - Electronic city
20km - ITPB
16km - Narayana Hrudayala



Site Address:
119/2, Next to Indus International School, Sarjapura- Atibele Main Road, Bangalore - 562125
Google Map : <http://goo.gl/maps/4AW7U>

